



SWAN VALLEY
ADVENTURE CENTRE
Creating Inspiring Experiences

CORPORATE INFORMATION PACK

TEAM BUILDING ADVENTURES - ACTIVITY
PACKAGES - CATERING - CONFERENCE ROOMS

Swan Valley Adventure Centre has been **creating inspiring experiences** for adventurers since 2016. With a core desire to create a **safe place of growth and enjoyment** for all individuals, our team share and promote the same values: honesty, integrity and respect. A short **30 minute drive from Perth CBD**, our unique picturesque site provides guests with a multitude of options for **outdoor adventures, school camps, corporate conferences, team building activities, nature retreats** and much more.

With the ability to customize and personalize adventure packages to suit **every age, activity level and physical ability**, our passionate skilled instructors lead **land, air and water activities**; providing countless opportunities to try exciting experiences, conquer fears and learn new skills.

Our venue can accommodate up to **296 guests** in charming camp houses and our exceptional Chefs can cater to a wide variety of menu options that **suit every taste**.

Nestled in the beautiful Swan Valley, we boast an amazing 89 acres of tranquil open spaces and historic buildings with one mission: create **unforgettable moments** that will be talked about for years to come.

We look forward to welcoming you!



DESIGN YOUR TEAM ADVENTURE!

Splash into the Swan River with your canoe; test your team's management of fear with the high ropes course or improve their communication skills over problem-solving activities.

It's your team, your adventure, you design it!

At Swan Valley Adventure Centre, you may choose from a wide range of **fun outdoor activities for all abilities**, lead by our skilled instructors.

Our adventure programs are extremely flexible and can be tailored around your activity choices or desired outcomes: **leadership, teamwork, communication**, or simply creating a **bonding experience** for your staff. We can host groups from 10 to 200 participants.

Whether you choose our air, land or water activities, you will create your team's most memorable experiences with us!

LAND - Take on a team-building challenge with some of our 15 problem-solving activities.

AIR - Develop trust through encouragement with one of our many high-flying activities.

WATER - With exclusive private access to the Swan River, we are proud to host a variety of water activities. You can also enjoy our swimming pool to cool off after an adventurous day.



**Bookings required. All Prices are Inclusive of GST. Pricing applies from Monday to Saturday. Sunday Activities incur a 35% surcharge. Each Activity is 1.5 hours long. Rates and Price Variations: rates quoted are appropriate to the product at the time of quoting and these rates may change subject to supply chain variations. Please refer to our website for our Terms & Conditions.*





ARCHERY

Become the Robin Hood of the Swan Valley with this popular sport that hones hand-to-eye coordination. Based in our undercover archery range, participants will be taught the skills they need to hit the bullseye. Our sessions follow the strict guidelines set by Archery WA.

LEAP OF FAITH

One of our most challenging activities! You will climb a large telegraph pole, stand on top of it and take "the leap of faith" by jumping off to try and hit a large orange ball hanging in the air. Your group members have to work together to keep the ropes tight as you leap off the pole. A great teambuilding activity to develop trust towards each other.

CANOEING

Discover the beautiful Swan River with one of our single-bladed paddles or three person canadian canoes. Expect to get wet, so bring a full change of clothes and shoes.



HIGH ROPES COURSE

Our state-of-the-art high ropes course is set in a beautiful area of bushland near Jane Brook. A tree-top adventure to test and conquer your fears. We use a continuous safe roller belay system for ensuring the safest possible experience.

TEAM BUILDING

Challenging problem-solving activities that require teamwork, leadership and communication skills. There is often more than one way to proceed, so teams need to use their initiative and quickly devise a decision-making process. Challenges are tailored to suit the needs and goals of each group.

OTHER ACTIVITIES AVAILABLE

- | | |
|----------------|-------------------|
| ABSEILING | KAYAKING |
| ROCK-CLIMBING | RAFT BUILDING |
| POSSUM GLIDER | COMMANDO COURSE |
| FLYING FOX | ESCAPE ROOM |
| CRATE STACK | ORIENTEERING |
| JACOB'S LADDER | CATAPULT BUILDING |

TEAMBUILDING ADVENTURES

Multi Adventure Pack – Full Day

\$210 pp – Catering included

This program allows you to experience 4 of the exciting adventure activities on offer*.

Activities are examples and can be substituted for any activity we offer your group.

****BBQ Menu information and pricing located in the Corporate Menu-Additional Options page.**

- 9.00 - 10.30: ***Teambuilding Challenge***
- 10.30 - 10.45: Morning Tea
- 10.45 - 12.15: ***Archery***
- 12.15 - 12.45: Lunch
- 12.45 - 14.15: ***Flying Fox***
- 14.15 - 14.30: Afternoon Tea
- 14.30 - 16.00: ***Canoeing***
- 17.30: BBQ Dinner or Sausage Sizzle (optional, not included in price) **

Multi Adventure Pack – Half Day

\$120 pp – Catering included

Morning or Afternoon sessions available.

Activities are examples and can be substituted for any activity we offer your group.

- 9.00 - 10.30: ***Teambuilding Challenge***
- 10.30 - 10.45: Morning Tea
- 10.45 - 12.15: ***High Ropes Course***
- 12.15 - 12.45: Lunch

High Adrenaline Pack – Half Day

\$120 pp – Catering included

Morning or Afternoon sessions available.

Activities are examples and can be substituted for any activity we offer your group.

- 9.00 - 10.30: ***High Ropes Course***
- 10.30 - 10.45: Morning Tea
- 10.45 - 12.15: ***Leap of Faith***
- 12.15 - 12.45: Lunch

***Bookings required. All Prices are Inclusive of GST. Pricing applies from Monday to Saturday. Sunday Activities incur a 35% surcharge. Each Activity is 1.5 hours long. Rates and Price Variations: rates quoted are appropriate to the product at the time of quoting and these rates may change subject to supply chain variations. Please refer to our website for our Terms & Conditions.**



ENJOY OUR MENU OPTIONS, BON APPETIT!

Enjoy the charm and style of Swan Valley for your next function, we are sure to have a catering package that meets your needs. We specialize in catering for all groups and events. Our Corporate Menu is tailored to deliver a unique and formal hospitality experience to your group with Morning/Afternoon Tea and Lunch options available.

Our spacious facilities offer panoramic views of the unique Swan Valley Adventure Centre.

Our inhouse Chefs will prepare your catering choice to be served in our Dining Room.

For those with special dietary needs, speak with one of our friendly staff members to integrate additional options into your package.

Please be aware that it is critical for anyone with an allergy to notify us a minimum of one week prior to the function.



CORPORATE MENU*



Morning or Afternoon Tea

Please choose two of the following items below

SWEET SELECTION

- Scones with thick cream and strawberry jam (gf)
- Flourless chocolate cake, mascarpone and berry coulis (gf)
- Orange and poppyseed flourless cake, thick cream (gf)
- Mixed mini Danish selection
- Assorted freshly baked sweet mini muffins
- Homemade selection of cookies
- Fruit Platter

SAVOURY SELECTION

- Chorizo and potato frittata, roasted leek and dill aioli (gf)
- Asparagus, pumpkin and smoked feta frittata (v, gf)
- Ham and Swiss cheese croissants
- Tomato, Swiss cheese and basil pistou croissants (v)
- Individual quiche Lorraine
- Smoked feta and caramelized onion tart (v, gf)
- Assorted freshly baked savoury muffins
- Pumpkin & sweet potato honey tart (v)

Lunch

SANDWICHES

Please select two of the following fillings, one sandwich, baguette or round roll per person

Please note that sandwiches and round rolls can be gluten free.

- Smoked ham, onion jam, tasty cheese, wild rocket
- Grilled Mediterranean vegetables, spinach, herb mayonnaise (v)
- Continental – roast beef, hungarian salami, cheese, salad, relish
- Chicken, lettuce, dijonnaise
- Roast beef, tomato, Spanish onion, cheese, horseradish cream
- Curried egg and salad (v)
- Cheese, tomato, rocket and relish (v)
- Smoked salmon, cream cheese and dill

SALADS

Please select two of the following salads

- **Classic Caesar salad**
- **Chicken salad**
 - Asian herbs, Vietnamese chicken with asian coleslaw, crispy shallots, nam jim
- **Classic Ranch Apple Slaw**
- **Roasted pumpkin salad**
 - Spinach, feta, peptitas, balsamic glaze (v, gf)
- **Roasted Broccoli and quinoa salad**
 - Rocket, currants, yoghurt dressing (v, gf)
- **Wild rocket, pear and parmesan salad** (v, gf)
- **Watermelon smoked feta and tofu** (v)
- **Garden salad**
 - Cucumber, tomato, red onion, carrot, lettuce (v, gf)

**The corporate menu is included in your half and full-day activity packages.*

Please select from the above options.



ADDITIONAL OPTIONS



Additional platters

Arancini platter - \$9/person

Chefs selection of arancini (2 per person), parmesan cheese, aioli

Australian platter - \$10/person

Beef party pies, mini sausage rolls, tomato sauce and BBQ Sauce

Asian platter - \$8/person

A selection of vegetable spring rolls and samosas (1 of each per person), sweet chilli sauce and sweet soy sauce

Vegetarian platter - \$9/person

Spinach and feta cigar and vegetable quiche (1 of each per person)

Antipasto platter - \$14.50/person

Continental meats, house-marinated olives, feta, Turkish bread, grissini, chorizo and marinated vegetables

Dips and Turkish bread platter - \$11/person

A selection of house-made dips and toasted Turkish bread

Fruit platter - \$8/person

A selection of fresh seasonal fruits

Cheese platter - \$15.50/person

A selection of local and imported cheeses, dried fruits, water crackers, quince paste

BBQ Menu**

Minimum 20 people required

***BBQ Options only available for groups who book the Multi Adventure Pack - Full Day**

SAUSAGE SIZZLE - extra \$14.50/person

BBQ Beef Sausages, Hot Dog Buns, Grilled Onions, Potato Salad, Coleslaw, Garden Salad, Condiments

BBQ DINNER - extra \$39.50/person

BBQ ITEMS

Marinated Chicken

BBQ Beef Sausages

Beef Sirloin Steak

SALAD

Garden Salad

Potato Salad with Egg

Cabbage and Apple Slaw

DESSERTS

Fruit Salad

Chocolate Mudcake

A selection of bread rolls and condiments to accompany the BBQ
Soft drink, juice and water, tea and coffee are included.

*** Vegetarian and Gluten Free options available**

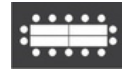
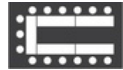
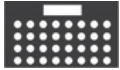


TAILOR YOUR FUNCTION ROOM!

Swan Valley Adventure Centre has superior facilities aimed at assisting any organisation to achieve its specific **conference, event or function** objectives.

From **large open conference rooms** ideal for lectures, to **smaller meeting rooms** or intimate breakout rooms for workshops, our wide range of facilities offer the perfect space for your organisation to achieve its goals. In addition to the broad range of sizes, we work with you to tailor a layout to best suit your needs.

AUDITORIUM BANQUET CLASSROOM U-SHAPE BOARDROOM



Every function room booking includes **Free WiFi, cabled internet*, whiteboards, lecterns and projector screen.**

**In selected rooms.*

Audiovisual Equipment will incur the following additional fees:

Data Projector + Mini Cube PA System = \$100/day Microphone = \$5/day. For other AV equipment or Printing services, pricing will be provided upon request.

Flipcharts = \$40/day.



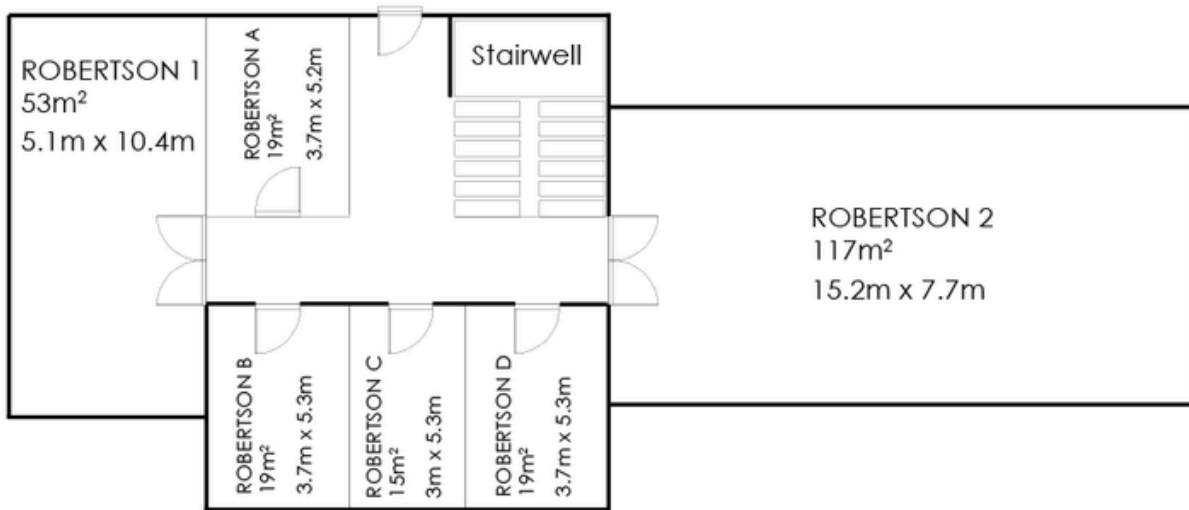
ROBERTSON

Upstairs (no universal access)

ROOM 1 - up to 55 pax.
\$180 full day / \$90 half day

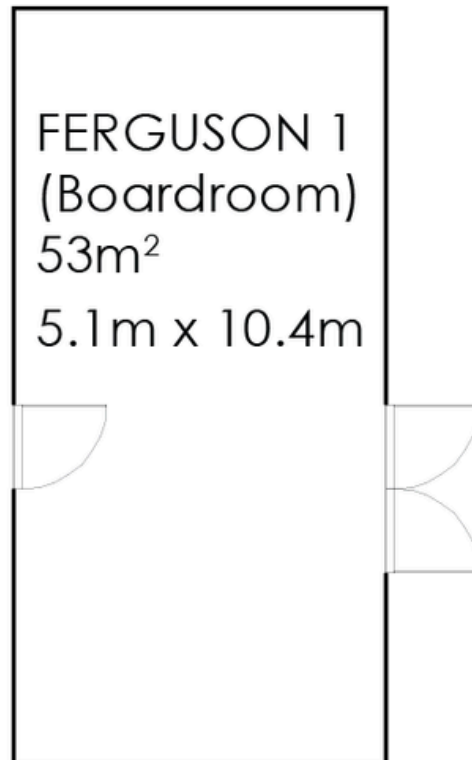
ROOM 2 - up to 120 pax.
\$400 full day / \$200 half day

ROOMS A, B, C, D - up to 6-10 pax.
\$100 full day / \$ 50 half day



FERGUSON

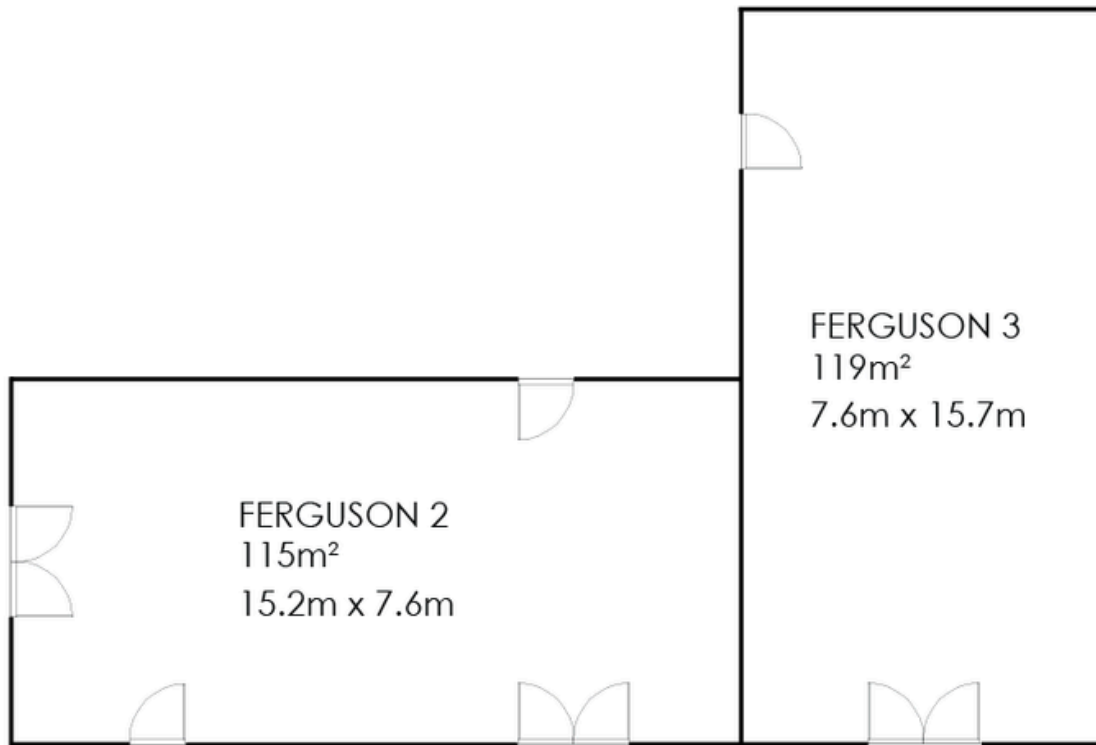
BOARDROOM - up to 20 pax.
\$400 full day / \$200 half-day
incl. TV with Wifi



FERGUSON

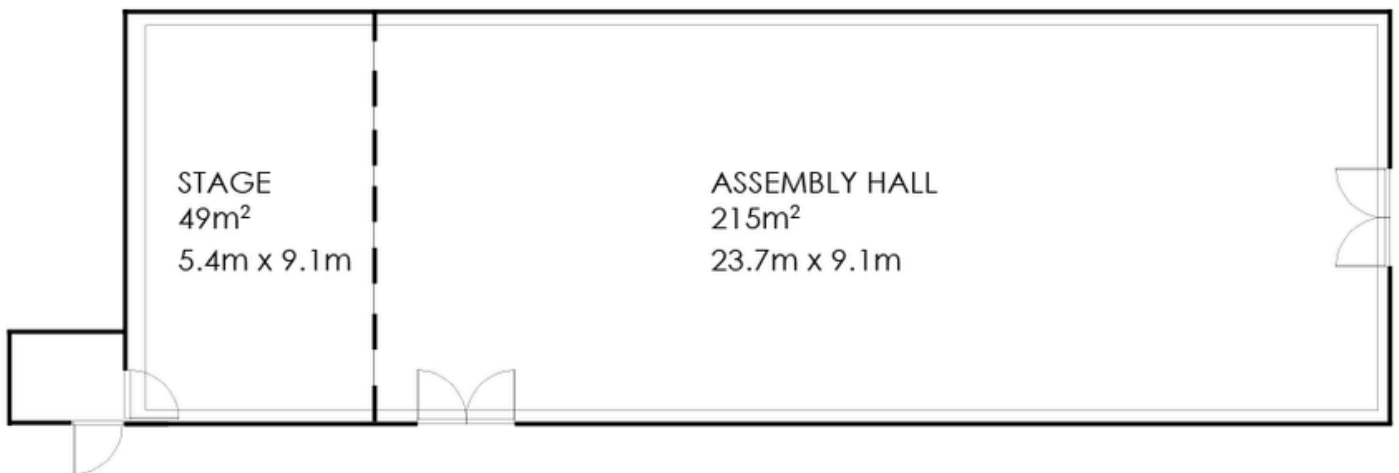
ROOM 2 - up to 70 pax.
\$400 full day / \$200 half day

ROOM 3 - up to 70 pax.
\$400 full day / \$200 half day



ASSEMBLY HALL

Up to 300 pax.
\$450 full day / \$200 half day

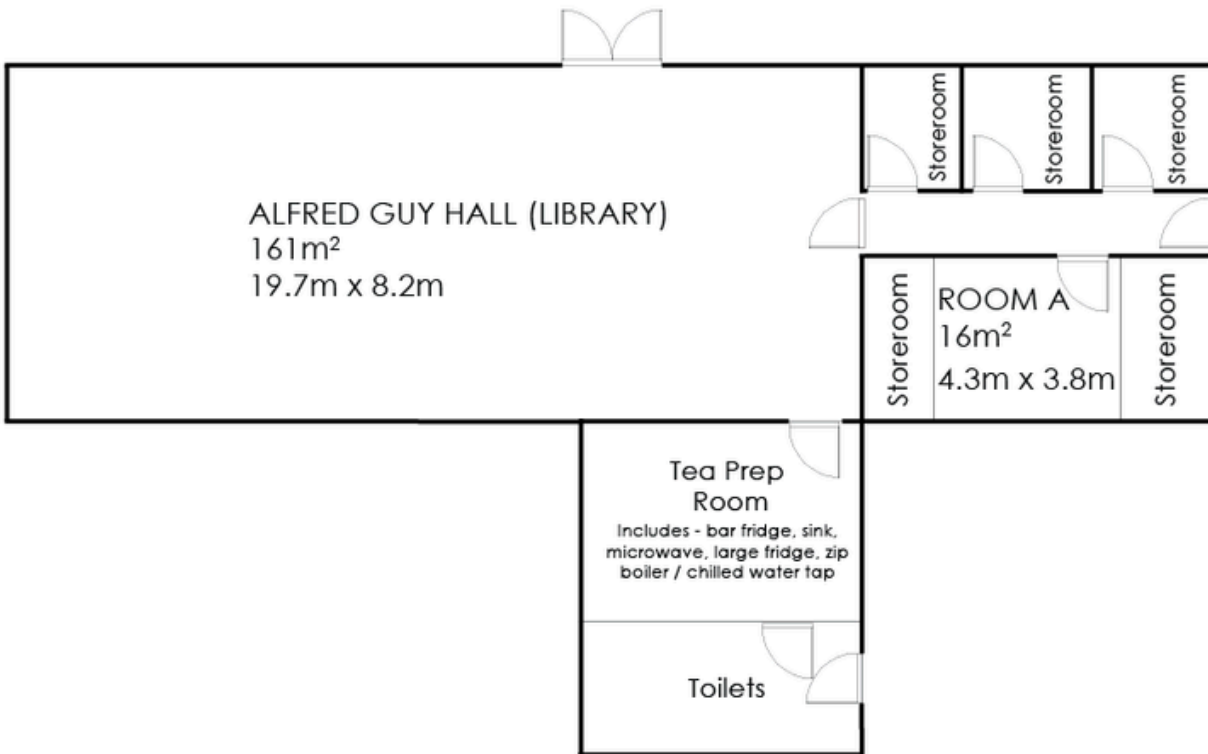


ALFRED GUY

HALL - up to 180 pax.
\$400 full day / \$200 half day

ROOM A - up to 10 pax.
\$100 full day / \$50 half day

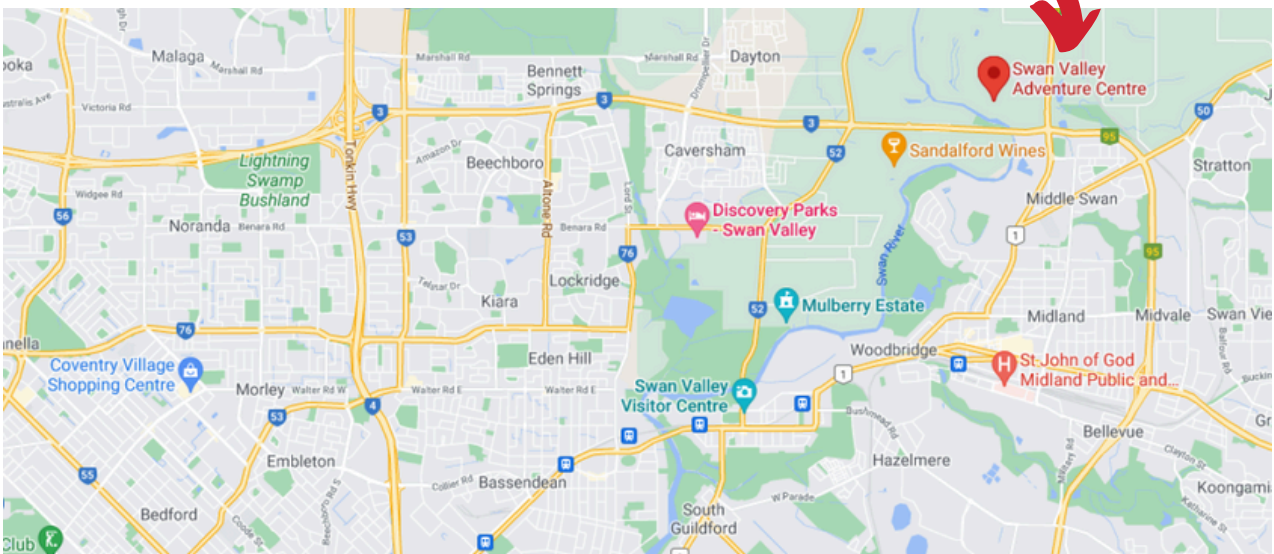
Tea Prep Room
\$88 full day / \$44 half day



FUNCTION ROOMS

WHEN WILL YOUR NEXT INSPIRING EXPERIENCE BE?

We are just off the Reid Highway, 30 minutes from Perth CBD





SWAN VALLEY
ADVENTURE CENTRE

Creating Inspiring Experiences

58 Yule Avenue, Middle Swan, 6056 WA

www.swanvalleyadventurecentre.org

info@swanvalleyadventurecentre.org

(08)9374 5600

